

THE CURIOSITY PLACE

powered by



GREAT LAKES
CHILDREN'S MUSEUM

GREAT LAKES CHILDREN'S MUSEUM

EDUCATION PROGRAM GUIDE

NEW PROGRAMMING INSIDE!



SNEAK PEEK!

FOR MORE INFO :
GREATLAKESKIDS.ORG

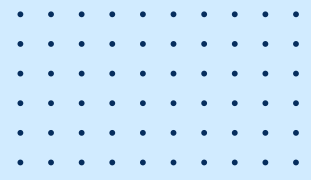
CONTACT US 231-932-4526

NEW

GREAT LAKES CHILDREN'S MUSEUM FIELD TRIPS

ALL NEW!

THE CURIOSITY PLACE
GREAT LAKES CHILDREN'S MUSEUM powered by



ALL-NEW MUSEUM FIELD TRIP EXPERIENCES COMING FALL 2026

Get ready to take learning beyond the classroom walls and into a full museum experience!

The Great Lakes Children's Museum is introducing brand-new field trip programs designed to spark curiosity, creativity, and hands-on discovery for elementary students in grades K-5.

NEW THIS YEAR:

HANDS-ON STEM EXPERIENCES YOUR STUDENTS WILL LOVE

- DIVE INTO SCIENCE THROUGH REAL DISCOVERY
- EXPLORE TECHNOLOGY IN ACTION
- BUILD, TEST, AND CREATE LIKE ENGINEERS
- MAKE MATH COME ALIVE IN FUN, INTERACTIVE WAYS

WHY BOOK A FIELD TRIP AT GLCM?

- HANDS-ON, INTERACTIVE LEARNING
- CURRICULUM-ALIGNED EXPERIENCES
- CURIOSITY-DRIVEN EXPLORATION IN A MUSEUM SETTING
- A SHARED EXPERIENCE FOR YOUR STUDENTS
- LEAVE THE PLANNING TO US!



SPOTS WILL FILL QUICKLY—SECURE YOUR PREFERRED DATE TODAY.

DETAILS:

- DESIGNED FOR GRADES K-5
- \$5.00 PER STUDENT
- GROUP SIZES FROM 10 TO 120 STUDENTS
- CALL TODAY TO EXPLORE OUR NEW FIELD TRIP THEMES!



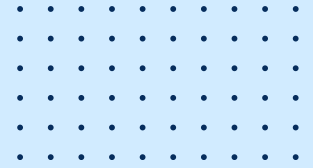
CALL MELISSA, EDUCATION MANAGER
DIRECT: 231-674-5629
MELISSA@GLCM.ORG

NEW

GREAT LAKES CHILDREN'S MUSEUM

STEM NIGHT

AT YOUR SITE



STEM Night is a hands-on, high-energy experience designed for large groups at *your* location.

Kids build, test, and explore through interactive stations in math, engineering, physics, and technology—designed to spark curiosity, creativity, and confidence.

We bring everything to you. Our museum staff transforms your space into a full STEM discovery zone, so you can simply enjoy the experience.

WHAT KIDS DO:

- BUILD AND TEST STEM CHALLENGES
- EXPLORE HANDS-ON ACTIVITY STATIONS
- PROBLEM-SOLVE AND COLLABORATE



A GREAT FIT FOR:

- SCHOOL FAMILY NIGHTS
- PTO SPONSORED EVENTS
- COMMUNITY CENTERS
- LARGE GROUP EVENTS

DETAILS:

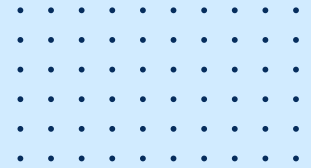
- RESERVE YOUR STEM NIGHT PROGRAM
- AGE RANGE: 5-12 YEARS OLD
- COST: \$500 BASE PRICING FOR 2-HOUR PROGRAM

Note: Base cost \$500 includes a 2-hour STEM Night with full setup, teardown, supplies, take-home materials, and on-site staff support. Additional time is \$100/hour.



CALL MELISSA, EDUCATION MANAGER
DIRECT: 231-674-5629
MELISSA@GLCM.ORG

MORE TO EXPLORE



WE OFFER A VARIETY OF OPPORTUNITIES TO SUPPORT YOUR EDUCATIONAL NEEDS!

TEEN VOLUNTEER PROGRAM:

Do your high school students need credit for volunteer hours?

- The Museum offers a program with training & mentorship to support a successful volunteer experience
- Students learn about leadership & working within a team that provides service to others
- Call today to learn how to sign up

ANNUAL EVENTS YOU DON'T WANT TO MISS!

- Festival of Trains Field Trip Option - December only
- Seasonal Celebrations like Boo Bash and Countdown to Noon
- Summer Camps
- New, rotating exhibits to fit your curriculum



CALL US TODAY TO LEARN HOW WE CAN SUPPORT YOUR STUDENT LEARNING!

ASK US ABOUT:

- How to bring a field trip right to your classroom for grades K-3
- Homeschool Classes
- Science Saturdays
- Upcoming Exhibits

DID YOU KNOW ?

As a Certified Autism Center™, Great Lakes Children's Museum is designed to serve every learner.



**BIG CURIOSITY.
BIG ENERGY.
BIG FUN.**

CALL MELISSA, EDUCATION MANAGER

DIRECT: 231-674-5629

MELISSA@GLCM.ORG